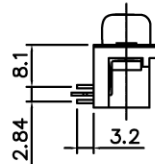
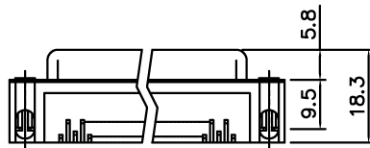
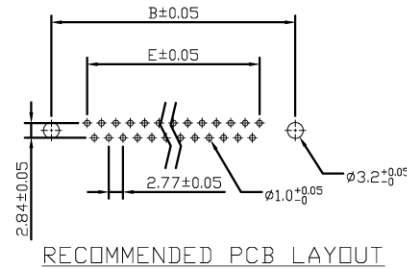
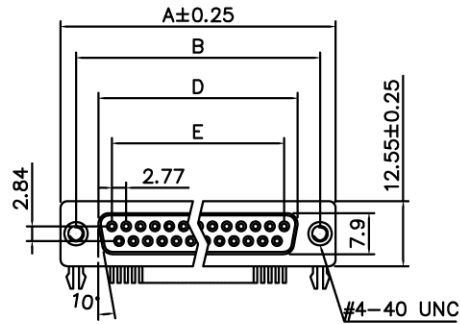


RoHS COMPLIANT

REV.	DESCRIPTION	ECN NO.	DWN.	CHK.	APVD.	DATE
A						



Product Specification

Material
 Insulator : Glass-Filled Thermoplastic PBT, UL94V-0
 Contact : Copper alloy
 Shell : Steel, 100u" Tin Over 50u" min Copper
 Clinch Nut : Copper alloy, Nickel Plated.
 Boardlock : Steel, Tin Plated.

Electrical

Contact Resistance : 20 milliohms
 Max at 1 AMP DC.
 Insulation Resistance : 1000
 megohms at 500 VDC
 Dielectric Withstanding Voltage :
 1000 VAC/rms 60Hz for 1 minute
 Current Rating : 3AMP
 Volatge Rating : 250 VAC/rms 60Hz

ORDER CODE;

DxLxxSBTK2NS-R

Shell size & No positions;

- DEL09 - 9 pos
- DAL15 -15 pos
- DBL25 - 15 pos
- DCL37 - 37 pos

Dimensions

Positions	A	B	D	E
9	30.81	24.99	16.33	11.08
15	39.20	33.30	24.70	19.39
25	53.05	47.04	38.40	33.24
37	69.40	63.50	54.80	49.86

DIMENSIONS: <input type="checkbox"/> MM [INCH] <input type="checkbox"/> INCH [MM] <input checked="" type="checkbox"/> MM ONLY		CAD GENERATED DRAWING, DO NOT MANUALLY UPDATE DRAWN BY AND DATE JUSTIN XING 06-08-06		TITLE R/A D-SUB RECEPTACLE; 8.08MM FOOTPRINT. 4-40UNC THREADED INSERTS & BOARDLOCKS	
UNLESS OTHERWISE SPECIFIED, GENERAL TOLERANCE: DECIMALS ANGLES .X ±0.38 [0.015] X° ±3° .X ±0.25 [0.010] X° ±1.0° .XX ±0.13 [0.005]		CHECKED BY AND DATE JUSTIN XING 06-08-06 APPROVED BY AND DATE KING CHIU 06-08-06 THIRD ANGLE PROJECTION			
MATERIAL		SCALE: 1 : 1 SIZE: A3		DRAWING NO.	
FINISH				DxLxxSBTK2NS-R	
		FILE NO.:		SHEET 1 OF 1	

DO NOT SCALE DRAWING